

# CONNECTOR MANUFACTURERS

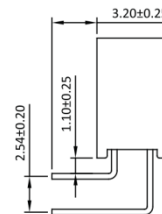
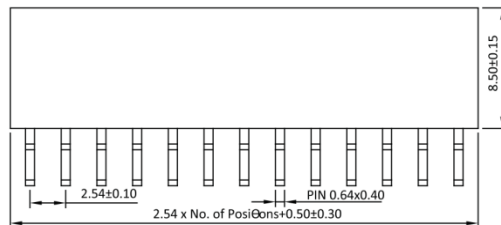
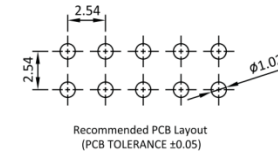
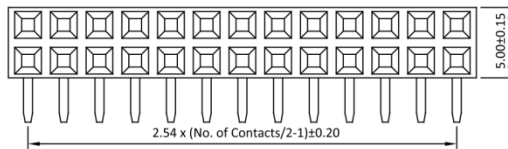
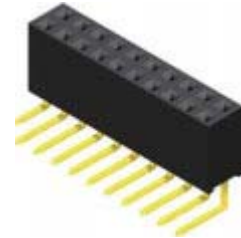
**TOPTek®**  
HARDWARE ELECTRONIC MANUFACTURER

www.toptek-co.com

## Female Header 2.54mm 2 Row H=8.5mm Right Angle Type

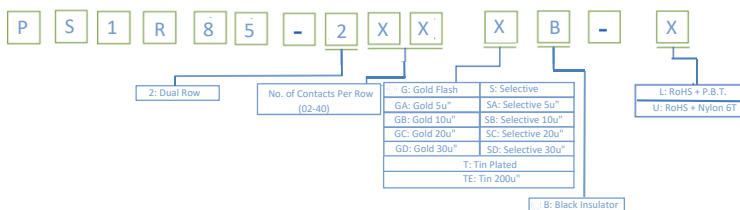
**Specifications**  
 Current Rate: 3 AMP  
 Insulation Resistance: 1000MΩ Min.  
 Contact Resistance: 20mΩ Max.  
 Dielectric Voltage: 1000V AC for one minute  
 Operation Temperature: -40°C to +105°C

**Material**  
 Insulator: Hi-Temp. Thermoplastic, UL 94V-0  
 Terminal: Copper Alloy  
 Plating: Gold Plated



Part No.: PS1R85-2XX-X

## ORDER INFORMATION



©: Standard Recommend



**RoHS**